

► 彩铝、拉丝、珠光、高光、镜面、防火板色卡



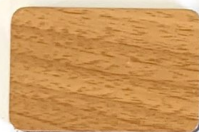
JX 601 白橡木 (White Oak)



JX 606 莎娜米黄 (Royal Botticino)



JX 611 爵士白 (Volakas White)



JX 602 樱桃木 (Cherry)



JX 607 金钱米黄 (Sunny Yellow)



JX 612 大花白 (Arabescato)



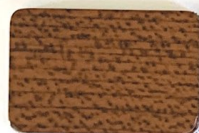
JX 603 柚木 (Teak)



JX 608 金花米黄 (Perlatto Svevo)



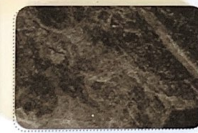
JX 613 云灰石 (Grey Stone)



JX 604 枫木 (Maple)



JX 609 胡桃木 (Walnut)



JX 614 啡网纹 (Emperor)



JX 605 红胡桃 (Red Walnut)



JX 610 黑胡桃 (Black Walnut)



JX 615 黑白根 (Black Marquina)



JX 616 澳洲麻 (Australian Hemp)



JX 621 银拉丝 (Brushed Silver)



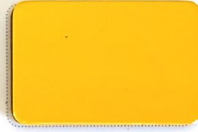
JX 626 珠光白 (Pearl White)



JX 617 金麻石 (Giallo Venetiano)



JX 622 金拉丝 (Brushed Gold)



JX 627 珠光黄 (Pearl Yellow)



JX 618 英国棕 (Tan Brown)



JX 623 棕拉丝 (Brushed Brown)



JX 628 珠光红 (Pearl Red)



JX 619 古铜拉丝 (Brushed Bronze)



JX 624 钢拉丝 (Brushed Steel)



JX 629 珠光蓝 (Pearl Blue)



JX 620 黑拉丝 (Brushed Black)



JX 625 乌拉丝 (Brushed Grey)

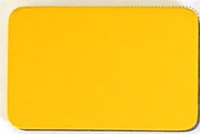


JX 630 珠光黑 (Pearl Black)

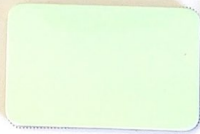


上海吉祥塑铝制品有限公司
Shanghai JIXIANG Aluminum Plastic Co., Ltd.

颜色：可根据客户要求调配。
标准规格：1220 x 2440 x 4mm / 1220 x 2440 x 3mm，特殊规格可根据客户的要求定制。
本色彩版版权归中国·吉祥集团有限公司所有，用于用户选色协助，仅作参考。



JX 631 高光黄 (Glossy Yellow)



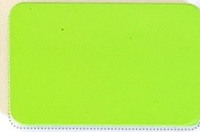
JX 636 高光青春白 (Glossy Bloom White)



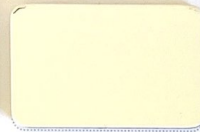
JX 641 高光白 (Glossy White)



JX 632 高光柠檬黄 (Glossy Lemon Yellow)



JX 637 高光嫩绿 (Glossy Vivid Green)



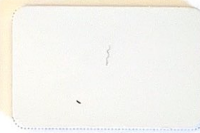
JX 642 高光乳白 (Glossy Milk)



JX 633 高光桔红 (Glossy Orange)



JX 638 高光绿 (Glossy Green)



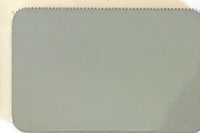
JX 643 高光浅灰 (Glossy Light Grey)



JX 634 高光红 (Glossy Red)



JX 639 高光浅蓝 (Glossy Light Blue)



JX 644 高光中行灰 (Glossy Bank Grey)



JX 635 高光酒红 (Glossy Wine Red)



JX 640 高光蓝 (Glossy Blue)



JX 645 高光黑 (Glossy Black)



JX 646 银镜面 (Silver Mirror)



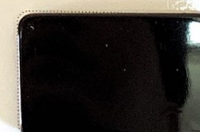
JX 647 灰镜面 (Grey Mirror)



JX 648 金镜面 (Gold Mirror)



JX 649 茶镜面 (Tawny Mirror)



JX 650 黑镜面 (Black Mirror)



B1级防火阻燃



A2级防火阻燃

22 金拉丝 (Brushed Gold)

颜色的英文名称 Color name

颜色的中文名称

颜色代码 (6 代表吉祥集团染色卡系列, 22 代表该色彩在吉祥色卡中的位置编号)

代表本公司产品造型类别

色
说
明